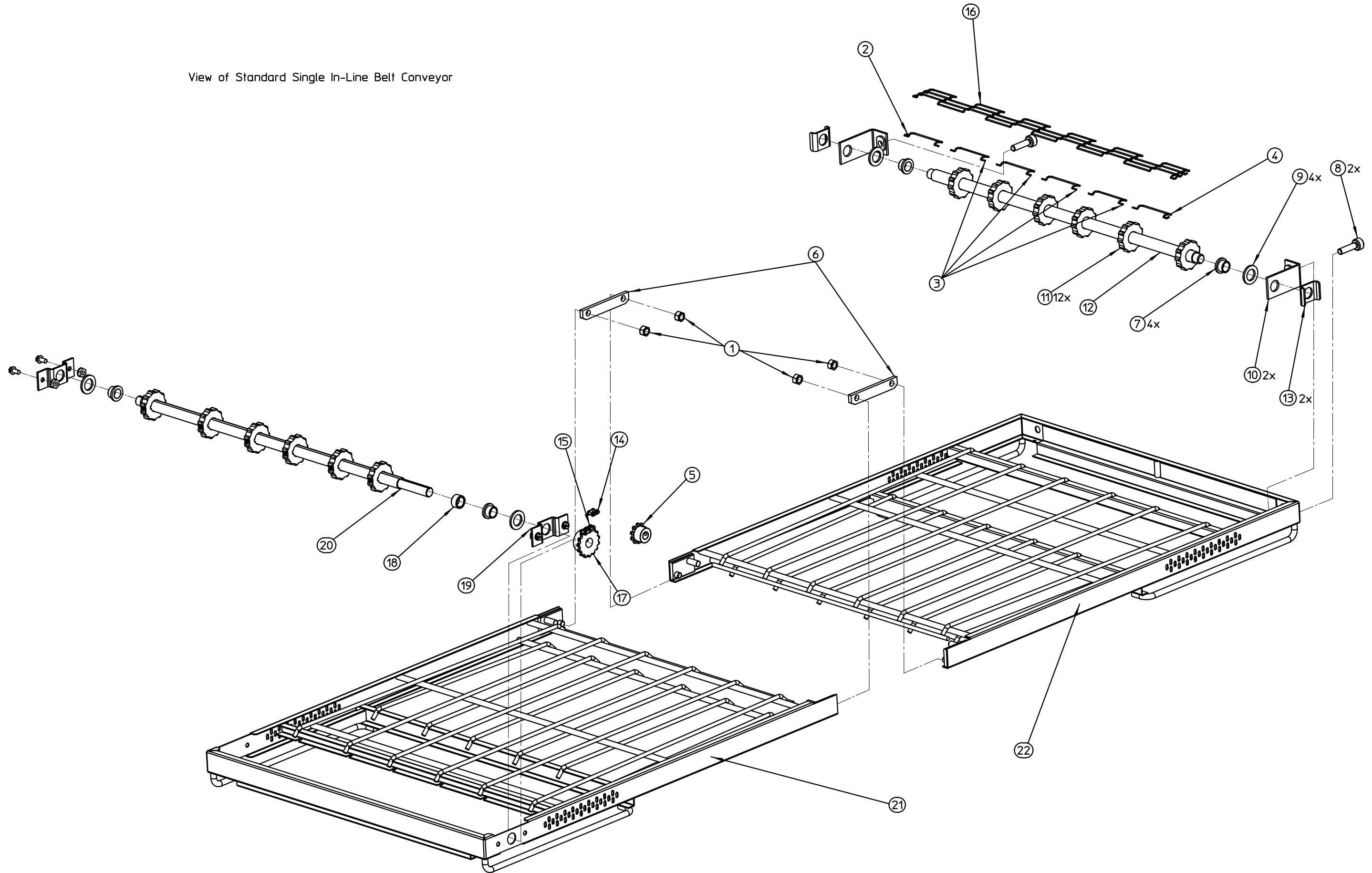


View of Standard Single In-Line Belt Conveyor



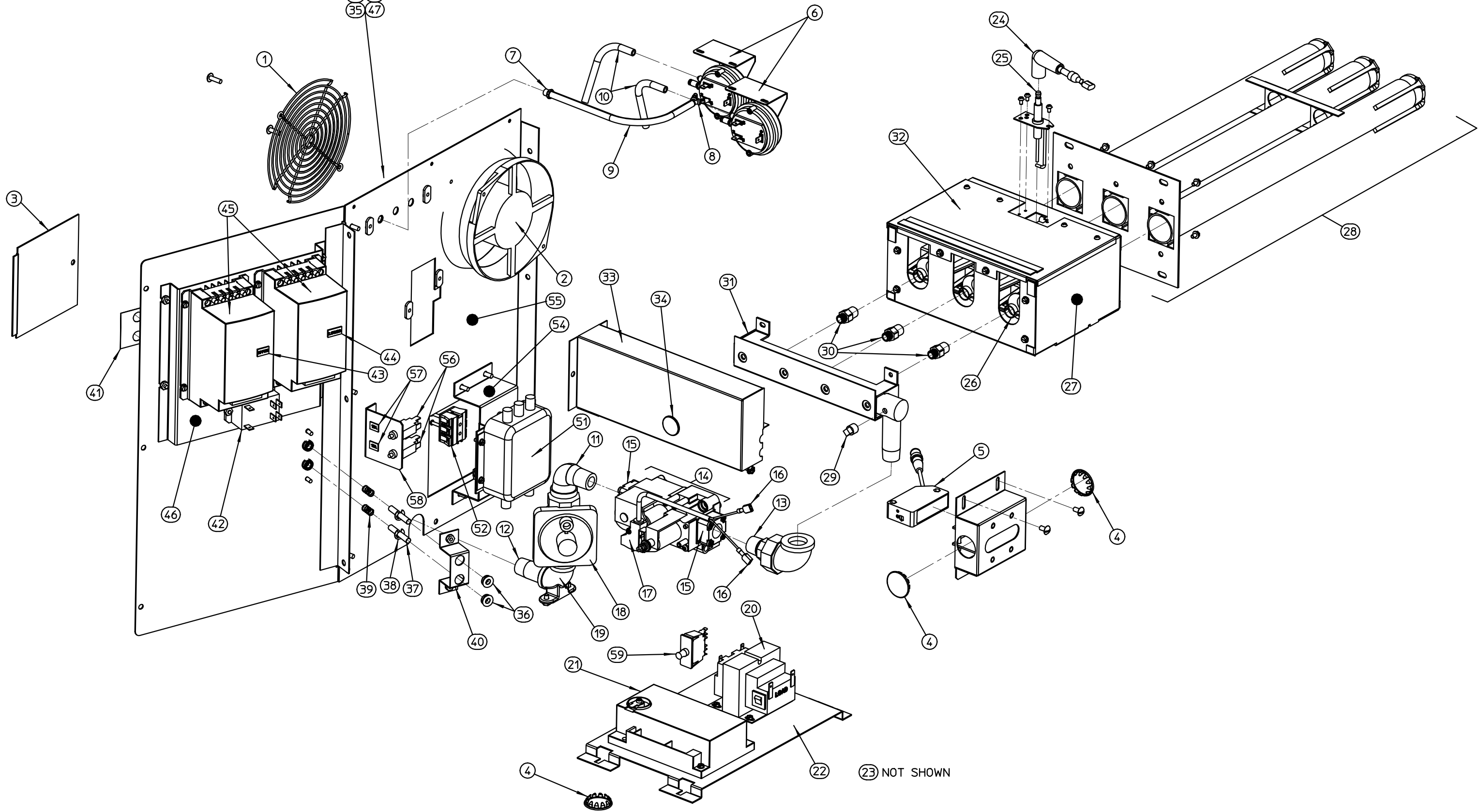
View of Standard In-Line Belt Conveyor

ITEM	QTY	PART NO.	DESCRIPTION
1	4	21176-0002	NUT,LOCKHEX SS 3/8-16
2	1	33900-0091	LINK,MASTER-LEFT-1/2P X 24"
3	4	33900-0092	LINK,MASTER-MIDDLE-1/2P X 24"
4	1	33900-0093	LINK,MASTER-RIGHT-1/2P X 24"
5	1	35409	SPRKT,35 CHAIN 10T 1/2
6	2	35900-0398	PLATE,PIVOT CONV FRAME PS200
7	4	22034-0003	BUSH,FLANGE 3/4OD X 5/8ID N/D
8	2	35000-1008	SCR,ADJ-CONV IDLER(200-310&60
9	4	35000-1080	SPACER,NYLON 3/4ID 1 1/4OD
10	2	37000-0413	WLDMT,IDLER (200,310,360)
11	12	22229-0003	SPRKT,CONV DRIVE 2.0D W/SCR
12	1	35900-0422	SHAFT,IDLER-CONV PS224
13	2	54947	BRKT,CONVEYOR SHAFT SUPPORT
14	1	22273-0002	LINK,MASTER #35
15	1	60183	CHAIN,ROLLER #35X13-7/8
16	1	66279	BELT,CONV WIRE SS 24"X120"
17	1	66581	SPRKT,#35-15T-5/8 BORE
18	2	43275	SPACER,CONVEYOR
19	2	49972	BRKT,CONVEYOR SUPPORT PS536
20	1	67240	SHAFT,DRIVE-CONV
21	1	67237	WLDMT,CONV FRM COMPT DR
22	1	67265	WLDMT,CONV FRM COMPT ID STD

NOT SHOWN

50 53
48 49
35 47

View of Left-Hand Electrical and Gas Control



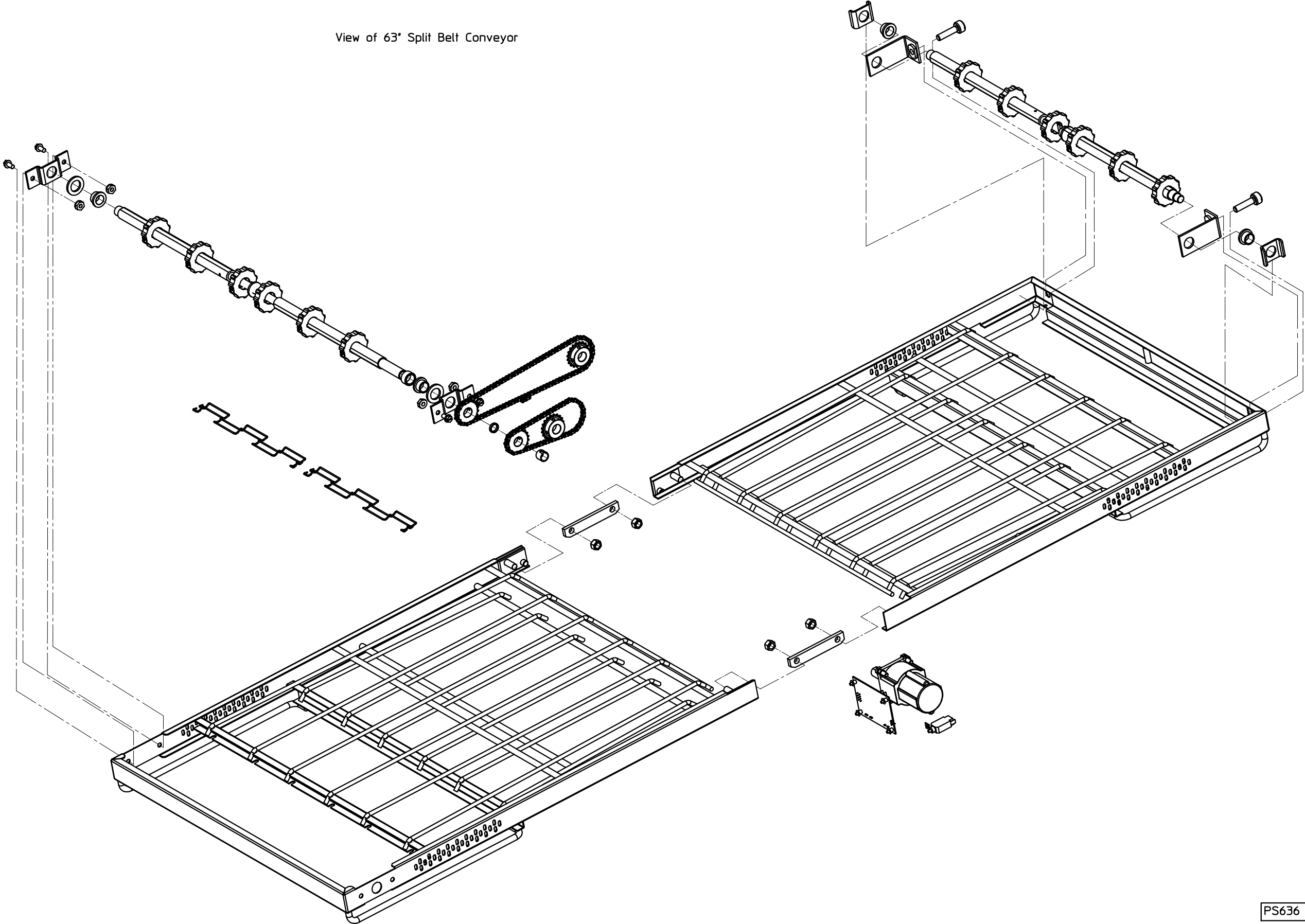
23 NOT SHOWN

Bill of Material of Left-Hand Electrical and Gas Control

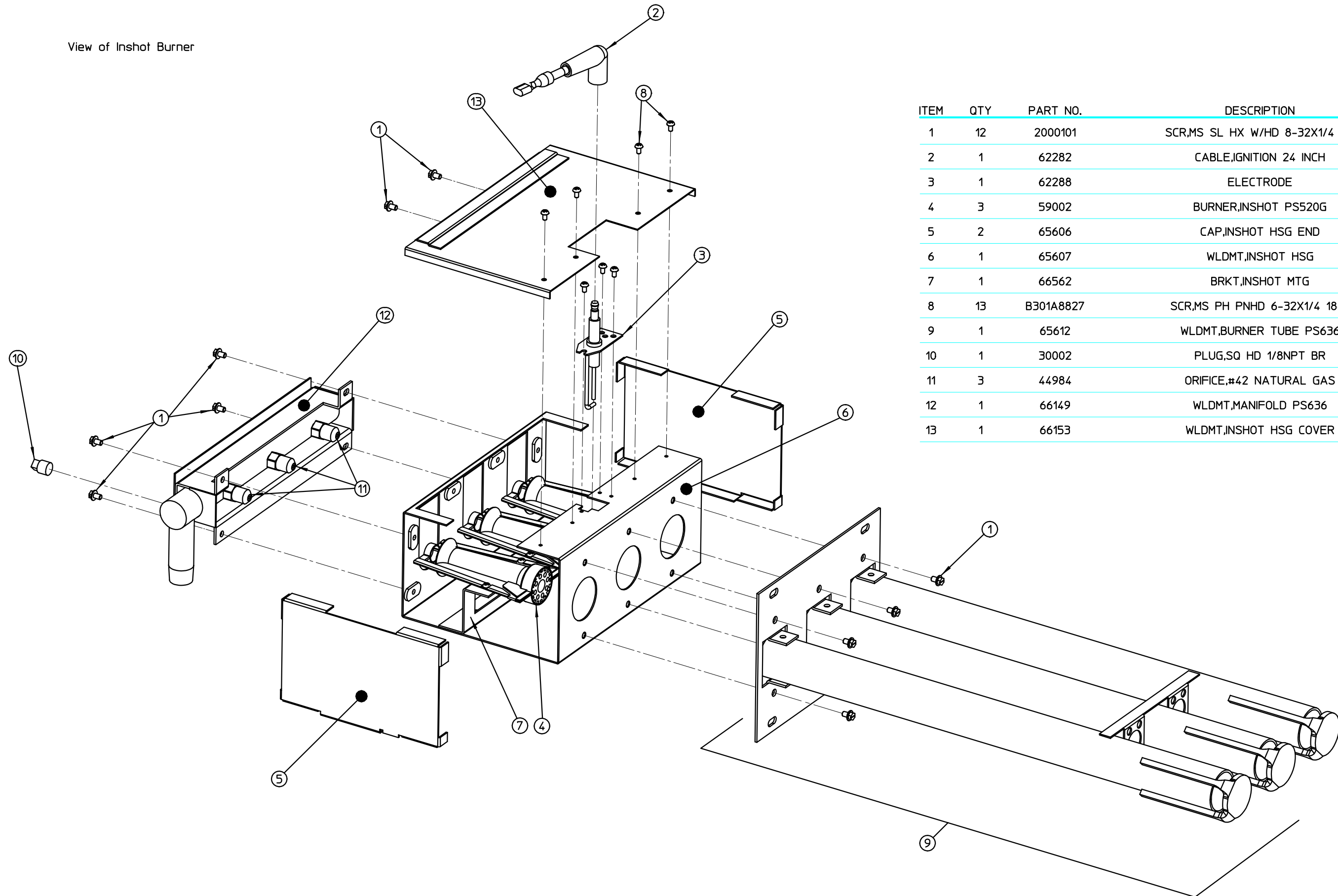
ITEM	QTY	PART NO.	DESCRIPTION
1	1	31497	GUARD,FINGER COOLING FAN 360WB
2	1	36451	FAN,COOLING 230V AC
3	1	59040	DOOR,ELEC CVR PS520G
4	3	3102533	PLUG,HOLE 1.125 DIA.
5	1	60185	SENSOR,ALLEN-BRADLEY 42BT
6	2	62044	SWITCH,AIR .08 WC (CLEVELAND)
7	1	62137	ADAPTER,PLASTIC THREADED
8	1	62138	CONNECTOR,PLASTIC Y
9	1	62140	TUBE,AIR SWITCH 8 1/2"
10	2	62141	TUBE,AIR SWITCH 4 1/2"
11	1	23122-0012	ELBOW,90 BLK 1/2 M/F
12	1	23151-0030	NIPPLE,BLK 1/2 X 2
13	3	23153-0004	NIPPLE,CLOSE BLK 1/2
14	1	60557	VALVE,GAS MODULATING HONEYWELL
15	2	60670	FLANGE,END 1/2" NPT
16	2	1455A8750	TERM,RCPT INSUL 1/4" 22-18AWG
17	1	60669	CONNECTOR,VALVE MODULATING
18	1	64169	REGULATOR,GAS 1/2X1/2
19	1	66184	ELBOW, 90 FLANGE 1/2
20	1	32108	XFMR,240V PRI 24V 65VA SEC
21	1	61602	IGNITION,SPARK MOD
22	1	65962	ASSY,CONTROL LH PS636
23	1	65965	WLDMT,PNL CTRL FRT LH
24	1	62282	CABLE,IGNITION 24 INCH
25	1	62288	ELECTRODE
26	1	59002	WLDMT,CTRL RR DOOR RH
27	1	65605	WLDMT,BOX INSHOT
28	1	65612	WLDMT,BURNER TUBE PS636
29	1	30002	PLUG,SQ HD 1/8NPT BR
30	3	44984	ORIFICE,#42 NATURAL GAS

ITEM	QTY	PART NO.	DESCRIPTION
31	1	66149	WLDMT,MANIFOLD PS636
32	1	66153	WLDMT,INSHOT HSG COVER
33	1	66187	WLDMT,BRNR AIR BOX
34	1	66298	PLUG,SHORTY WINDOW
35	1	66614	SHIELD,VENT TUBE
36	4	66720	BUSHING,SMOOTH BORE HEYCO S50
37	2	66721	ROD,CB RESET
38	2	66740	RING,RETAINING .250 EXT
39	2	66746	SPRING,CB RESET
40	1	68001	BRKT,ROD SUPPT
41	1	68026	LABEL,CB RESETS LH PS624
42	1	50794	RELAY,240VAC 2P1S
43	1	61915	LABEL,UPPER BLOWER
44	1	61916	LABEL,LOWER BLOWER
45	2	66065	INVERTER, 1/2 HP ACTECH
46	1	68051	ASSY,PEM DBL INVERTER BRKT
47	1	36244	LABEL,EQUIPOTENTIALITY GD TERM
48	1	37157	SCR,METRIC PH W/SL M6X20MM
49	2	37158	NUT,METRIC HEX M6 SST
50	1	15028707	TERM,SOLDERLESS LUG (14-6AWG)
51	1	33183	FILTER,RFI TYPE F1780DD20
52	1	44390	BLOCK,TERM 600V 50A 3 POLE
53	1	44397	SPACER,TERM BLOCK PS555
54	1	50278	ASSY,TERM BRKT/PEM PS540G
55	1	68054	WLDMT,CTRL BACK LH
56	2	59206	BREAKER,CIRCUIT 240V 10A
57	2	61917	LABEL,CIRC BRKR 240V 10A
58	1	68058	ASSY,CIRCUIT BREAKER BRKT/PEM
59	1	63909	SWITCH,INTLCK 12A N02P

View of 63' Split Belt Conveyor

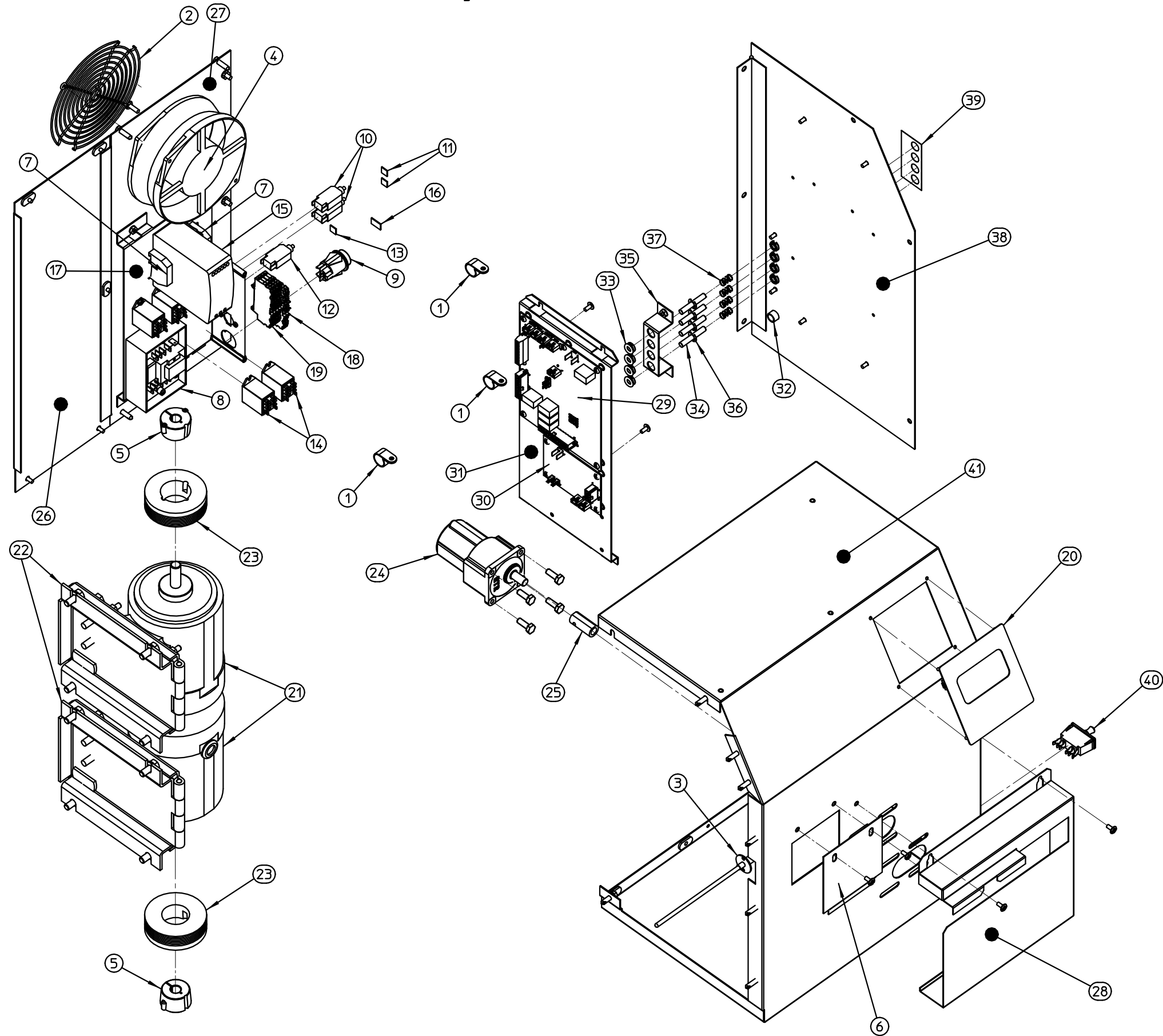


View of Inshot Burner



ITEM	QTY	PART NO.	DESCRIPTION
1	12	2000101	SCR,MS SL HX W/HD 8-32X1/4 ZP
2	1	62282	CABLE,IGNITION 24 INCH
3	1	62288	ELECTRODE
4	3	59002	BURNER,INSHOT PS520G
5	2	65606	CAP,INSHOT HSG END
6	1	65607	WLDMT,INSHOT HSG
7	1	66562	BRKT,INSHOT MTG
8	13	B301A8827	SCR,MS PH PNHD 6-32X1/4 18-8
9	1	65612	WLDMT,BURNER TUBE PS636
10	1	30002	PLUG,SQ HD 1/8NPT BR
11	3	44984	ORIFICE,#42 NATURAL GAS
12	1	66149	WLDMT,MANIFOLD PS636
13	1	66153	WLDMT,INSHOT HSG COVER

Right-Hand Electrical and Gas Control

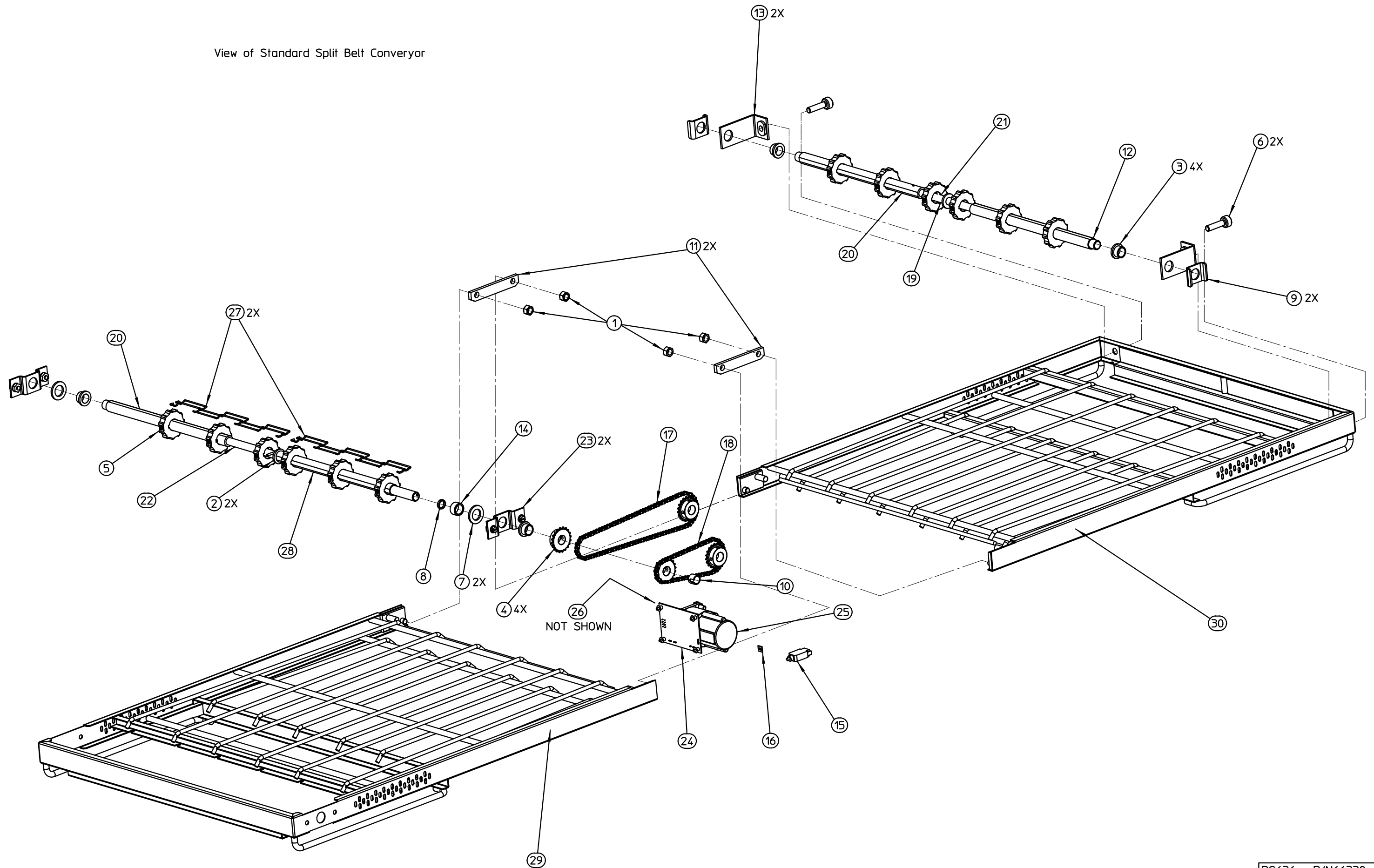


Bill of Material of Right-Hand Electrical and Gas Control

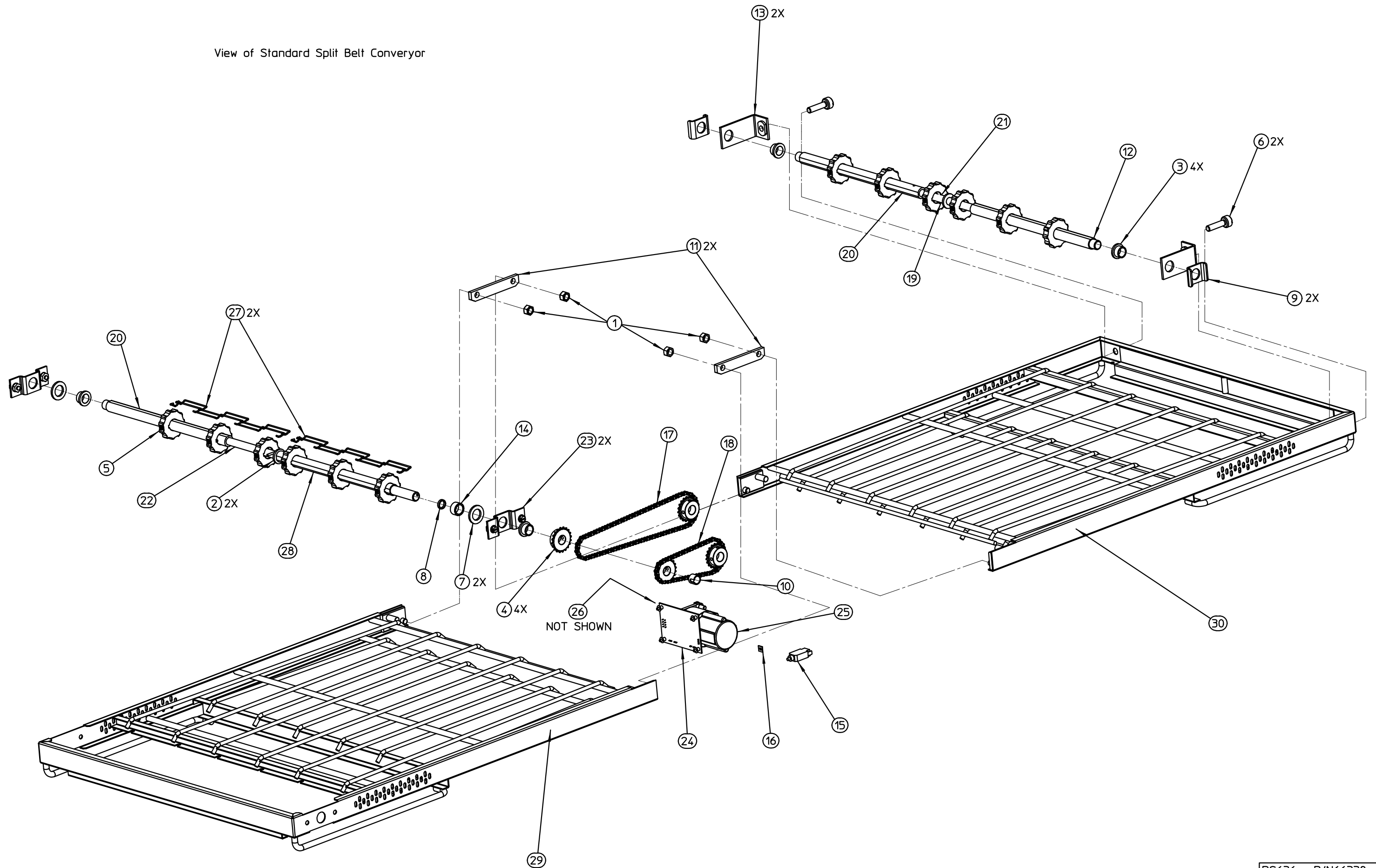
ITEM	QTY	PART NO.	DESCRIPTION
1	3	27276-0002	CLAMP,CABLE NYLON
2	1	31497	GUARD,FINGER COOLING FAN 360WB
3	1	33812-1	TC,TYPE 'J' SHIELDED 6.00X120"
4	1	36451	FAN,COOLING 230V AC
5	2	60958	BUSHING,TAPER LOCK 1/2" BORE
6	1	61161	COVER,PHOTOEYE
7	1	33363	END, STOP ENTRELEC
8	1	33983	CNTRL,ELEC HI-LIMIT 240V
9	1	35145	SWITCH,PB MOLVENO 250V
10	2	45036	BREAKER,CIRCUIT 240V 3A
11	2	45046	LABEL,CIRC BRKR 240V 3A
12	2	45644	BREAKER,CIRCUIT 240V 1A
13	2	45713	LABEL,CIRC BRKR 240V 1A
14	1	59132	RELAY,DPDT 24VDC COIL
15	1	61186	SUPPLY,PWR MDR-40-24 24VDC
16	1	61914	LABEL, HI LIMIT RESET
17	1	65494	ASSY,TERM BRKT/PEM
18	1	66322	ASSY,TERMINAL BLOCK BLUE
19	2	66323	END, STOP ENTRELEC
20	2	65564	DISPLAY, NCC CTRL
21	2	65701	MOTOR,PACESETTER 42R AC INVRT
22	2	65703	ASSY,ADJ MOTOR MOUNT
23	2	65716	SHEAVE,POLY-V 6-GRV 3.00D
24	1	65756	MOTOR,GEAR 1:200 GTR2
25	1	65818	ADAPTER,MOTOR SHAFT
26	1	66037	WLDMT,CTRL RR DOOR RH
27	1	66048	WLDMT,CTRL RR FIX RH
28	1	66049	BOX,CHAIN CVR
29	1	65565	BOARD, MAIN PS636
30	1	65566	BOARD,MOTOR CNTRL PS636

ITEM	QTY	PART NO.	DESCRIPTION
31	1	65568	ASSY,BRKT COMP DOOR RH PEM
32	1	60166	PLUG,WINDOW HEYCO 1305
33	8	66720	BUSHING,SMOOTH BORE HEYCO S50
34	4	66721	ROD,CB RESET
35	1	66724	BRKT,ROD SUPPT
36	4	66740	RING,RETAINING .250 EXT
37	4	66746	SPRING,CB RESET
38	1	67015	WLDMT,RH CTRL DOOR
39	1	67033	LABEL,CB RESETS
40	1	63909	SWITCH,INTLCK 12A NO2P
41	1	67243	WLDMT,CTRL FRT RH

View of Standard Split Belt Conveyer



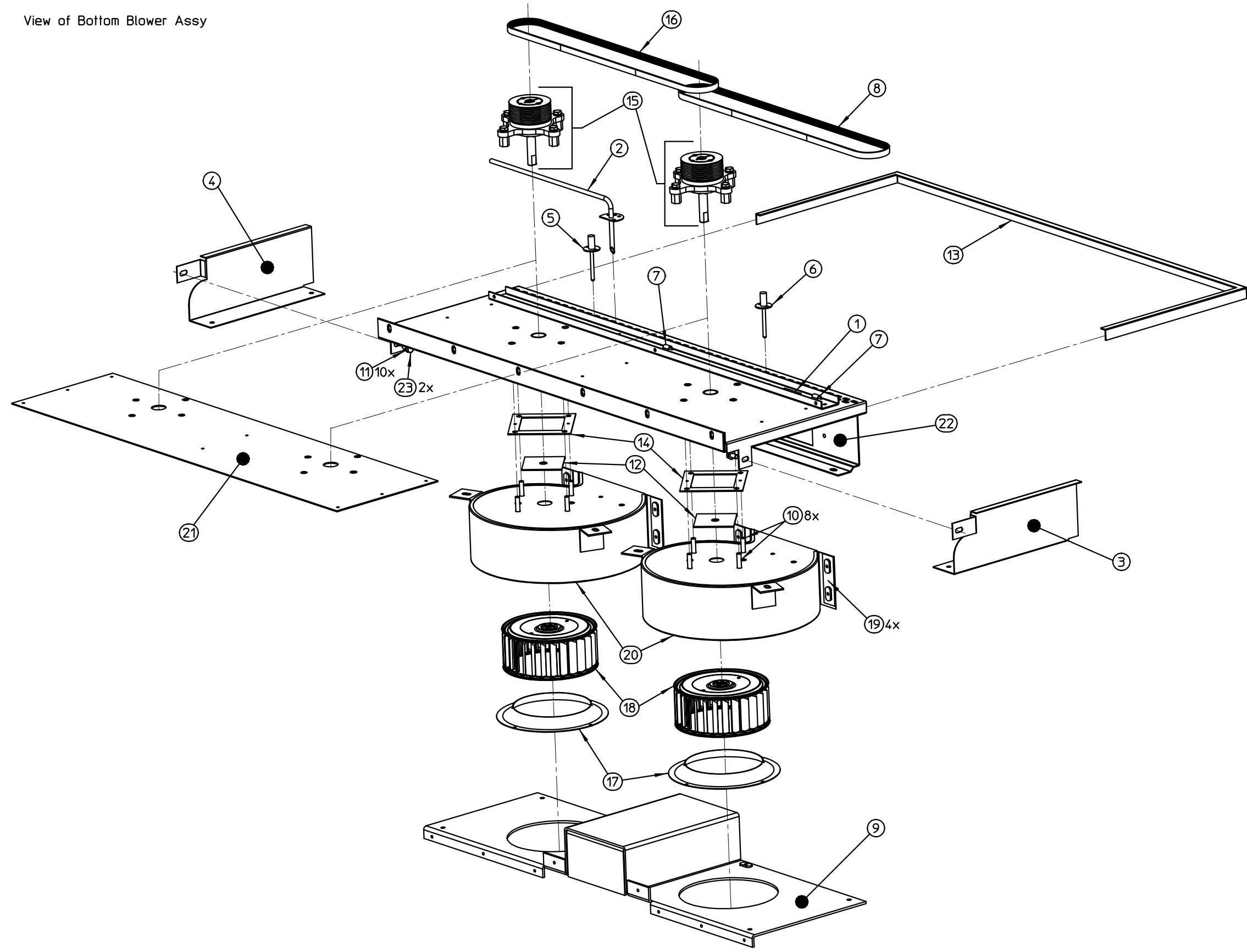
View of Standard Split Belt Conveyer



View of Standard Split Belt Conveyor

ITEM	QTY	PART NO.	DESCRIPTION
1	4	21176-0002	NUT,LOCKHEX SS 3/8-16
2	2	21415-0001	WASHER,FLAT BRZ 1
3	4	22034-0003	BUSH,FLANGE 3/4OD X 5/8ID N/D
4	4	22159-0003	SPRKT,25 CHAIN 20T 5/8B
5	12	22229-0003	SPRKT,CONV DRIVE 2.0D W/SCR
6	2	35000-1008	SCR,ADJ-CONV IDLER(200-310&60
7	2	35000-1080	SPACER,NYLON 3/4ID 1 1/4OD
8	1	35000-1531	SPACER,NYLON (360SB)
9	2	35900-0020	BRKT,CONVEYOR SHAFT SUPPORT
10	1	35900-0323	BUSH,SPROCKET-FRONT DRIVE
11	2	35900-0398	PLATE,PIVOT CONV FRAME PS200
12	1	35900-0406	SHAFT,REAR CONV IDLER PS224SB
13	2	37000-0413	WLDMT,IDLER (200,310,360)
14	1	43275	SPACER,CONVEYOR
15	1	45644	BREAKER,CIRCUIT 240V 1A
16	1	45713	LABEL,CIRC BRKR 240V 1A
17	1	49400-0051	ASSY,ROLLER CHAIN SPB 26-1/2"
18	1	49400-0070	ASSY,ROLLER CHAIN SPB 15"
19	1	21646-0004	PIN,ROLL SS H-DUTY 1/8
20	1	35900-0405	SHAFT,FRONT CONV PS224SB
21	1	35900-0517	SHAFT,CONN. FRONT CONV. IDLER
22	1	35900-0404	SHAFT,CONN FRNT CONV DRV PS224
23	2	49972	BRKT,CONVEYOR SUPPORT PS536
24	1	65566	BOARD,MOTOR CNTRL PS636
25	1	65756	MOTOR,GEAR 1:200 GTR2
26	1	65818	ADAPTER,MOTOR SHAFT
27	2	66340	BELT,CONV WIRE SS 11"X126"
28	1	67679	SHAFT,REAR CONV DRIVE 636SPB
29	1	67237	WLDMT,CONV FRM COMPT DR
30	1	67265	WLDMT,CONV FRM COMPT ID STD

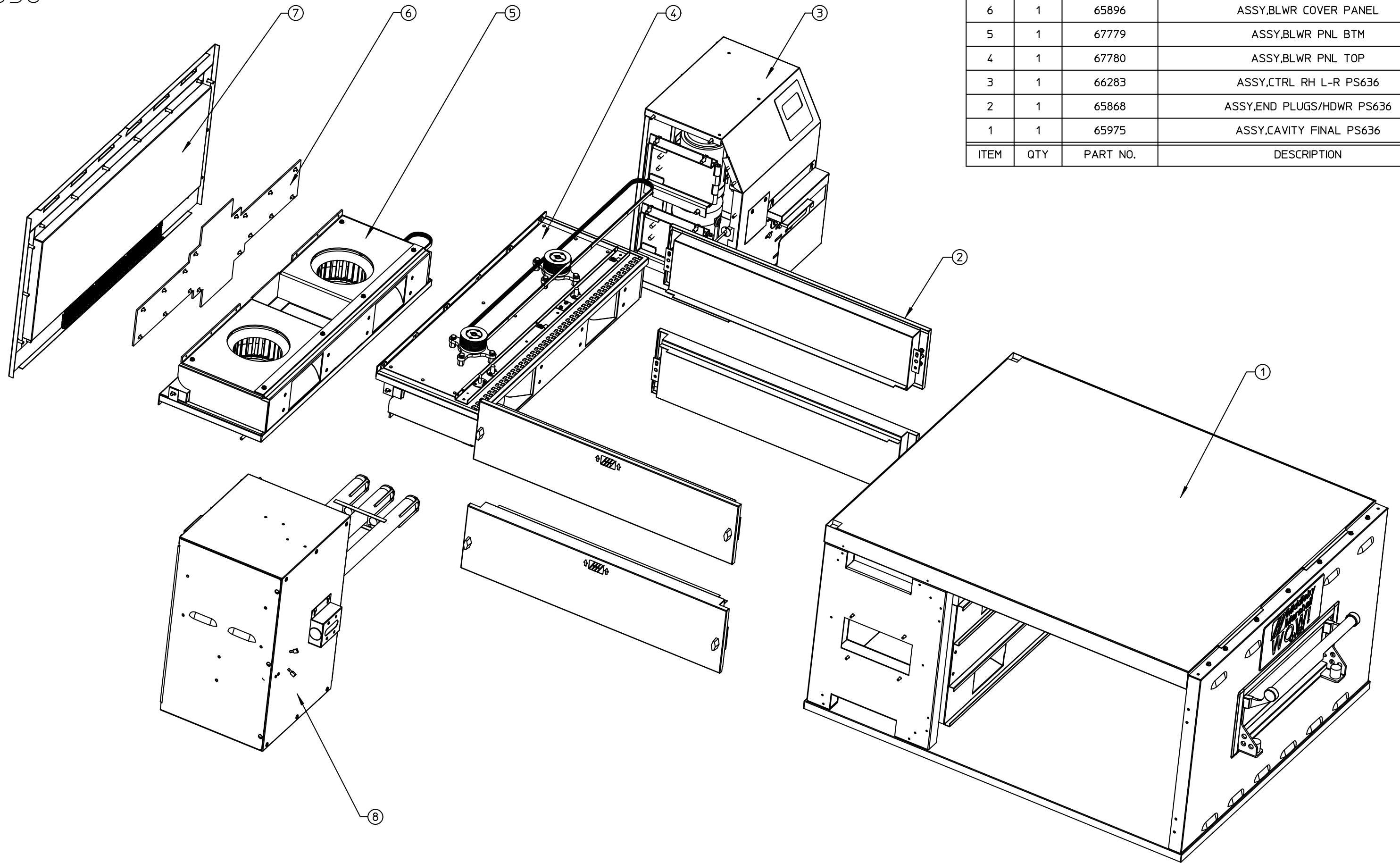
View of Bottom Blower Assy



View of Bottom Blower Assembly

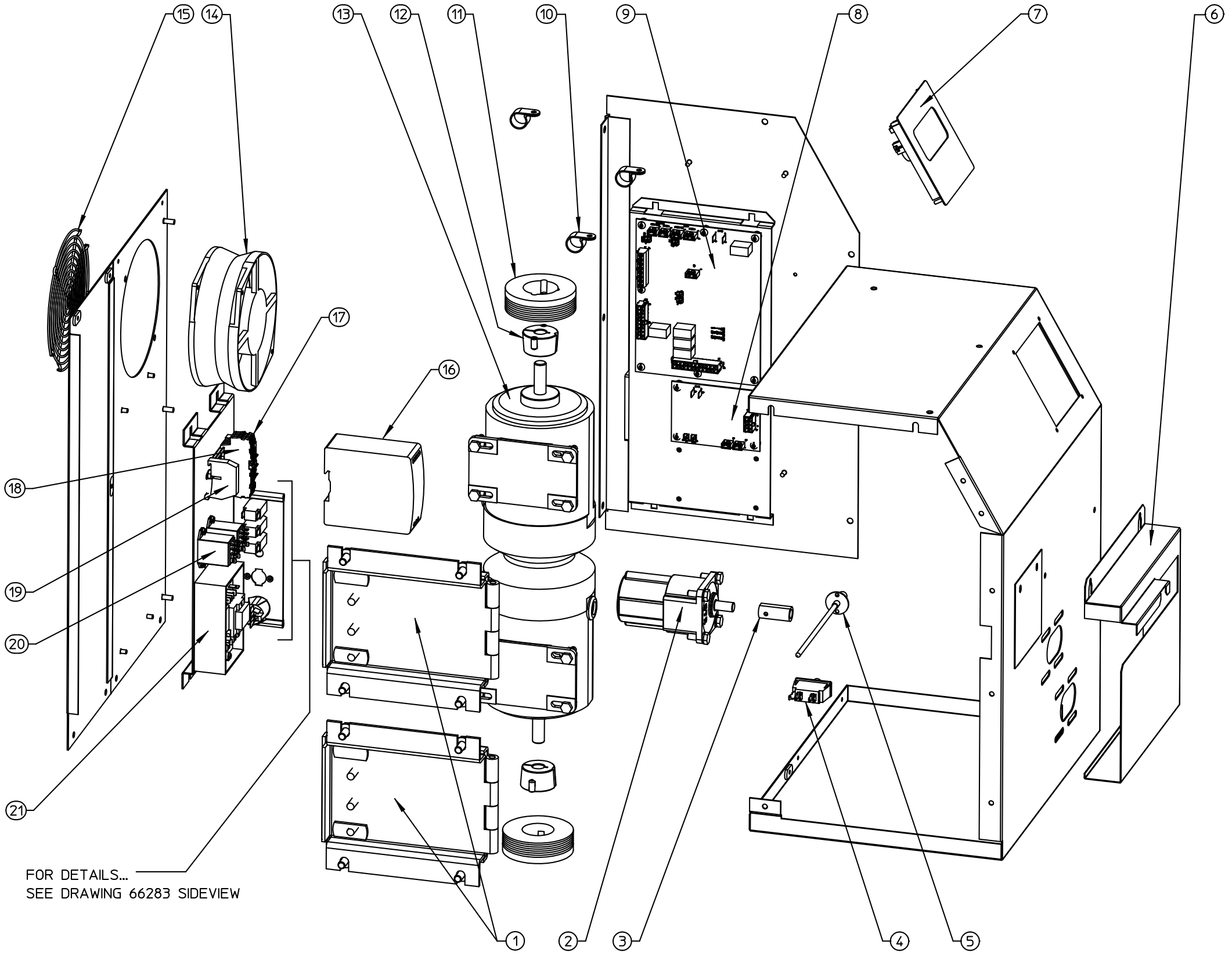
ITEM	QTY	PART NO.	DESCRIPTION
1	1	61865	PLATE, CVR SENSOR
2	1	65741	PROBE,AIR SENSE LWR PS636
3	1	65888	COVER,BLWR SIDE
4	1	65889	COVER,BLWR SIDE
5	1	66317	ASSY,TC W/ SOCKET (LONG)
6	1	66318	ASSY,TC W/ SOCKET (SHORT)
7	2	66379	CLIP,JIFFY 105-1/4"
8	1	66382	BELT,POLY-V JASON 370
9	1	67422	WLDMT,BLWR COVER
10	8	18A1S19	SCR,MS HX HD 1/4-20X1 ZP
11	10	21426-0002	WASHER,LOCK SS 1/4
12	2	59669	SEAL, SHAFT 1/2" PTFE PS624
13	1	65417	TAPE,FIBERGLASS 56X1X0.0625
14	2	66213	RETAINER, SHAFT SEAL PS636
15	2	66228	ASSY,BLWR BRG PS636
16	1	66381	BELT,POLY-V JASON 400
17	2	65685	RING,BLWR INLET
18	2	65754	WHEEL,BLWR 5.75D PS636
19	4	67418	WLDMT,BLWR HOUSING PLATE
20	2	67424	WLDMT,BLWR/BRKT HSG
21	1	67497	BOARD,BLWR OUTER PANEL
22	1	67777	WLDMT,BLWR INSUL
23	2	A6153	SCR,MS HH 1/4-20X1/2 18-8

PS636



8	1	65943	ASSY,CTRL LH GAS RR L-R PS636
7	1	67396	ASSY,BACK PS636
6	1	65896	ASSY,BLWR COVER PANEL
5	1	67779	ASSY,BLWR PNL BTM
4	1	67780	ASSY,BLWR PNL TOP
3	1	66283	ASSY,CTRL RH L-R PS636
2	1	65868	ASSY,END PLUGS/HDWR PS636
1	1	65975	ASSY,CAVITY FINAL PS636
ITEM	QTY	PART NO.	DESCRIPTION

66283 ASSY, CTRL RH L-R PS636

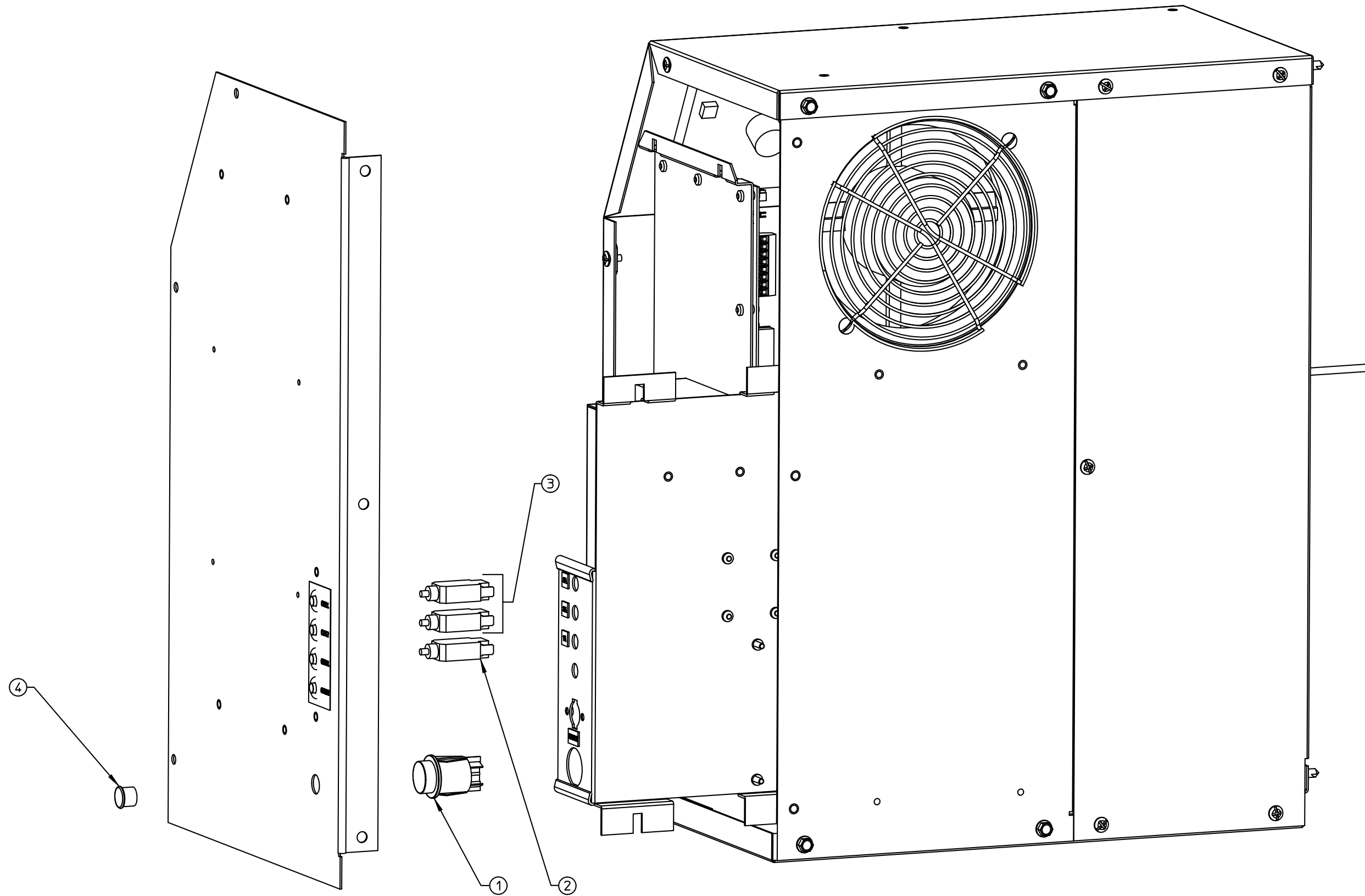


FOR DETAILS...
SEE DRAWING 66283 SIDEVIEW

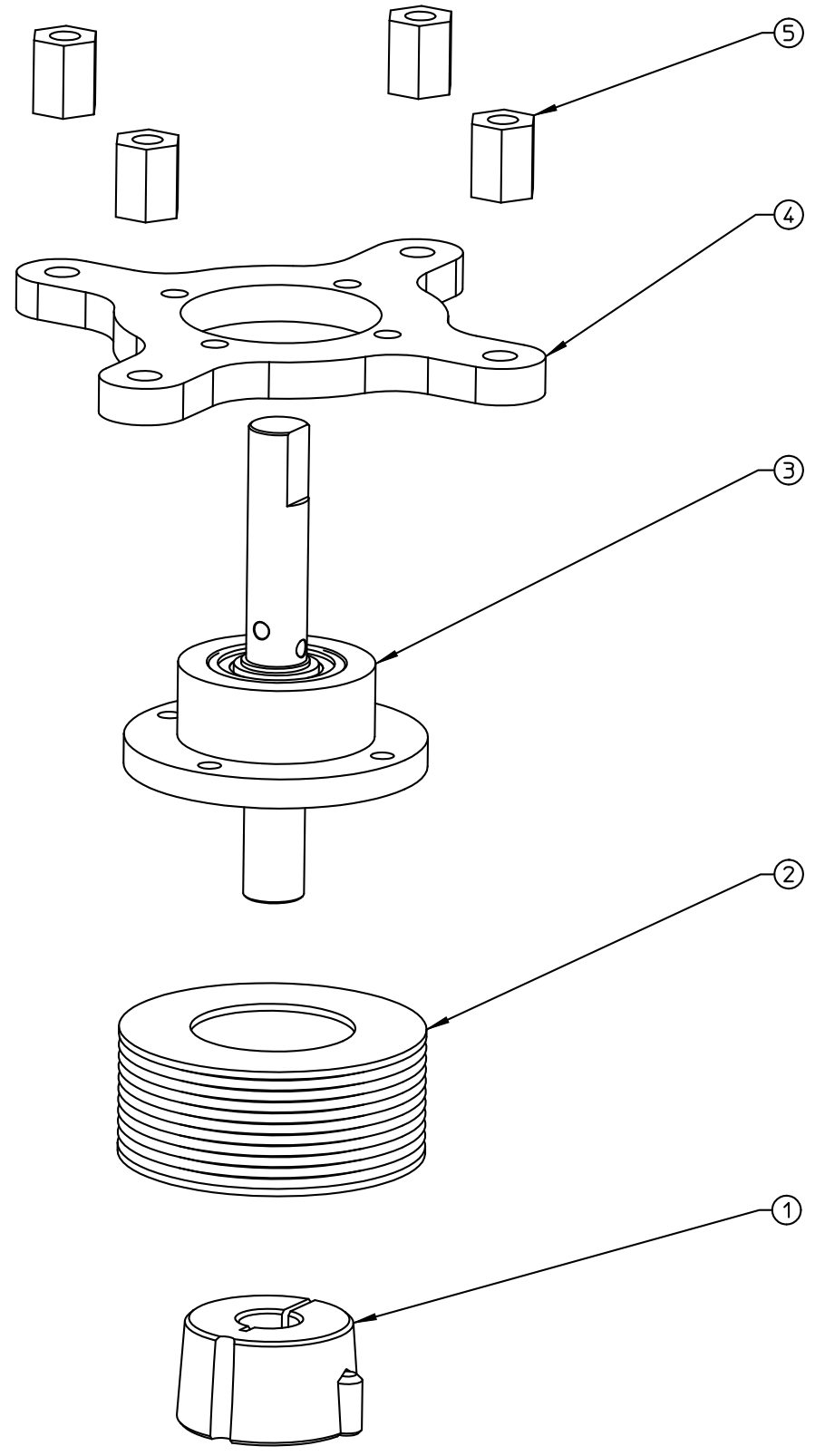
ITEM	QTY	PART NO.	DESCRIPTION
21	1	33983	CNTRL, ELEC HI-LIMIT 240V
20	2	59132	RELAY, DPDT 24VDC COIL
19	2	33363	END, STOP ENTRELEC
18	1	66322	ASSY, TERMINAL BLOCK BLUE
17	1	66323	ASSY, TERMINAL BLOCK GREY
16	1	61186	SUPPLY, PWR MDR-40-24 24VDC
15	1	31497	GUARD, FINGER COOLING FAN 360WB
14	1	36451	FAN, COOLING 230V AC
13	2	65701	MOTOR, PACESETTER 42R AC INVRT
12	2	60958	BUSHING, TAPER LOCK 1/2" BORE
11	2	65716	SHEAVE, POLY-V 6-GRV 3.00D
10	6	27276-0002	CLAMP, CABLE NYLON
9	1	65565	BOARD, MAIN PS636
8	1	65566	BOARD, MOTOR CNTRL PS636
7	1	65564	DISPLAY, NCC CTRL
6	1	66049	BOX, CHAIN CVR
5	1	33812-1	TC TYPE "J" SHEILDDED 6.00X120"
4	1	63909	SWITCH, INTLCK 12A NO2P
3	1	65818	ADAPTOR, MOTOR SHAFT
2	1	65756	MOTOR, GEAR 1:200 GTR2
1	2	65703	ASSY, ADJ MOTOR MOUNT

66283 ASSY, CTRL RH L-R PS636 SIDEVIEW

4	1	60166	PLUG, WINDOW HEYCO 1305
3	2	45036	BREAKER, CIRCUIT 240V 3A
2	1	45644	BREAKER, CIRCUIT 240V 1A
1	1	35145	SWITCH, PB MOLVENO 250V
ITEM	QTY	PART NO.	DESCRIPTION

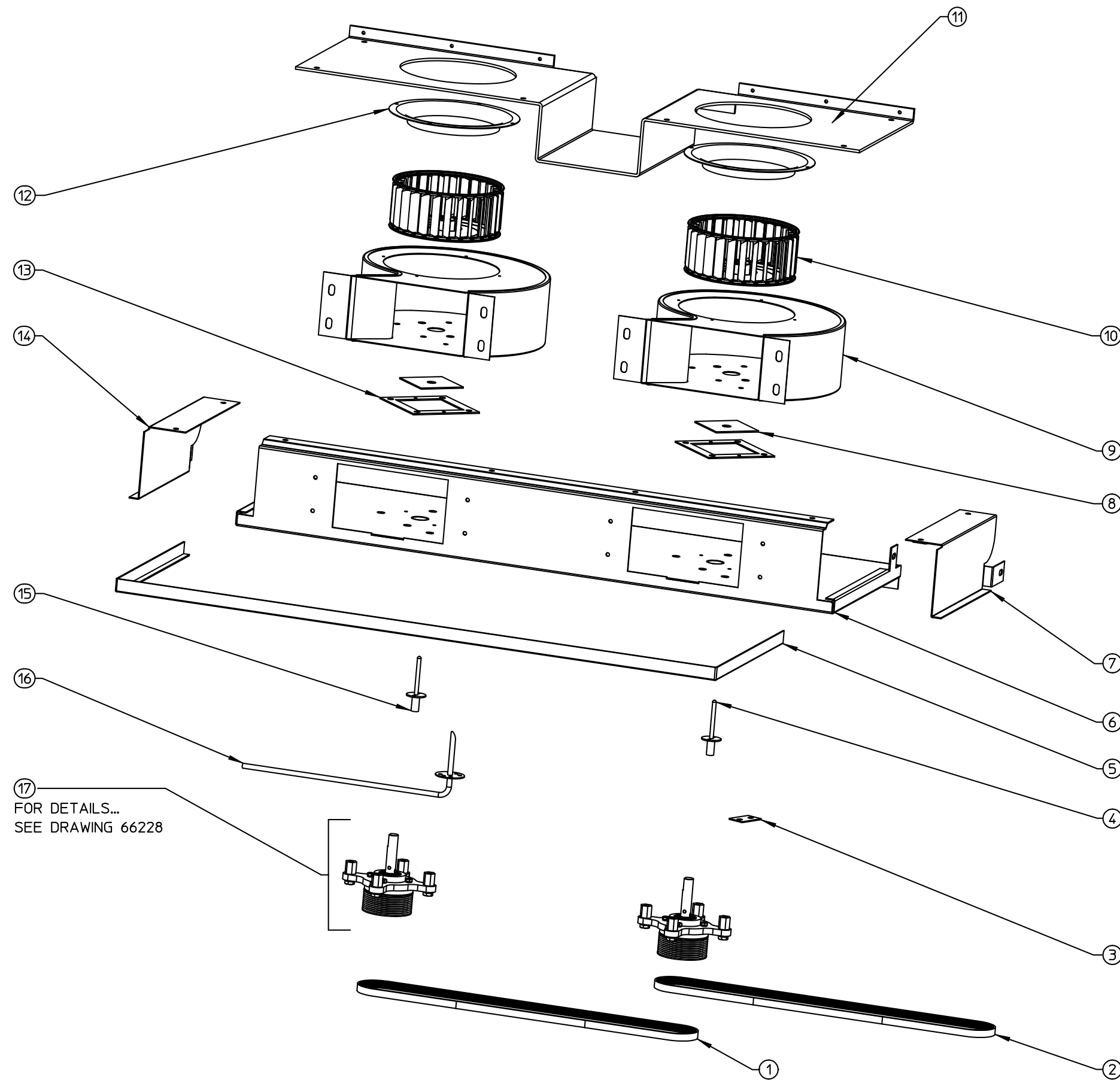


66228 ASSY, BLWR BRG PS636



5	8	59939	SPACER, THREADED 1/4-20 X .625
4	2	59938	PLATE, BLWR BRG MTG PS624
3	2	61745	ASSY, BRG/SHAFT HOLDER PRELOAD
2	2	66227	SHEAVE, POLY-V 10-GRV 2.53D
1	2	60958	BUSHING, TAPER LOCK 1/2" BORE
ITEM	QTY	PART NO.	DESCRIPTION

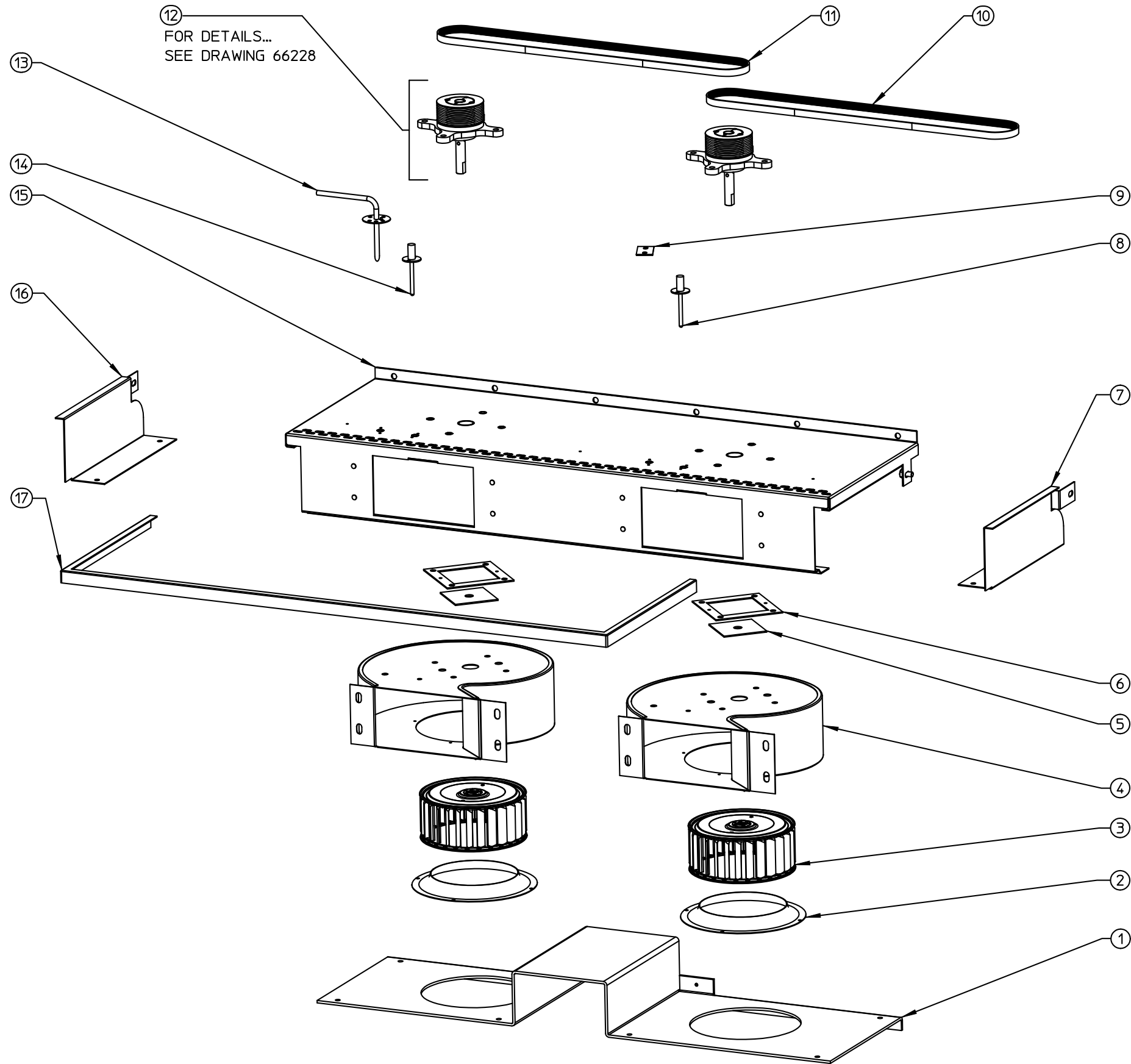
65826 ASSY, BLWR PANEL BTM



ITEM	QTY	PART NO.	DESCRIPTION
17	2	66228	ASSY, BLWR BEARING PS636
16	1	65741	PROBE, AIR SENSE LWR PS636
15	1	66317	ASSY, TC W/ SOCKET (LONG)
14	1	65891	WLDMT, BLWR SIDE COVER
13	2	66213	RETAINER, SHAFT SEAL PS636
12	2	65685	RING, BLWR INLET
11	1	66162	WLDMNT, BLWR COVER
10	2	65754	WHEEL, BLWR 5.75D PS636
9	2	65658	HOUSING, BLWR PS636
8	2	59669	SEAL, SHAFT 1/2" PTFE PS624
7	1	65890	WLDMNT, BLWR SIDE COVER
6	1	65833	WLDMNT, BLWR INSUL
5	1	65417	TAPE, FIBERGLASS 56 x 1 x 0.625
4	1	66318	ASSY, TC W/SOCKET (SHORT)
3	1	61865	PLATE, CVR SENSOR
2	1	66382	BELT, POLY-V JASON 370
1	1	66381	BELT, POLY-V JASON 400
ITEM	QTY	PART NO.	DESCRIPTION

17
FOR DETAILS...
SEE DRAWING 66228

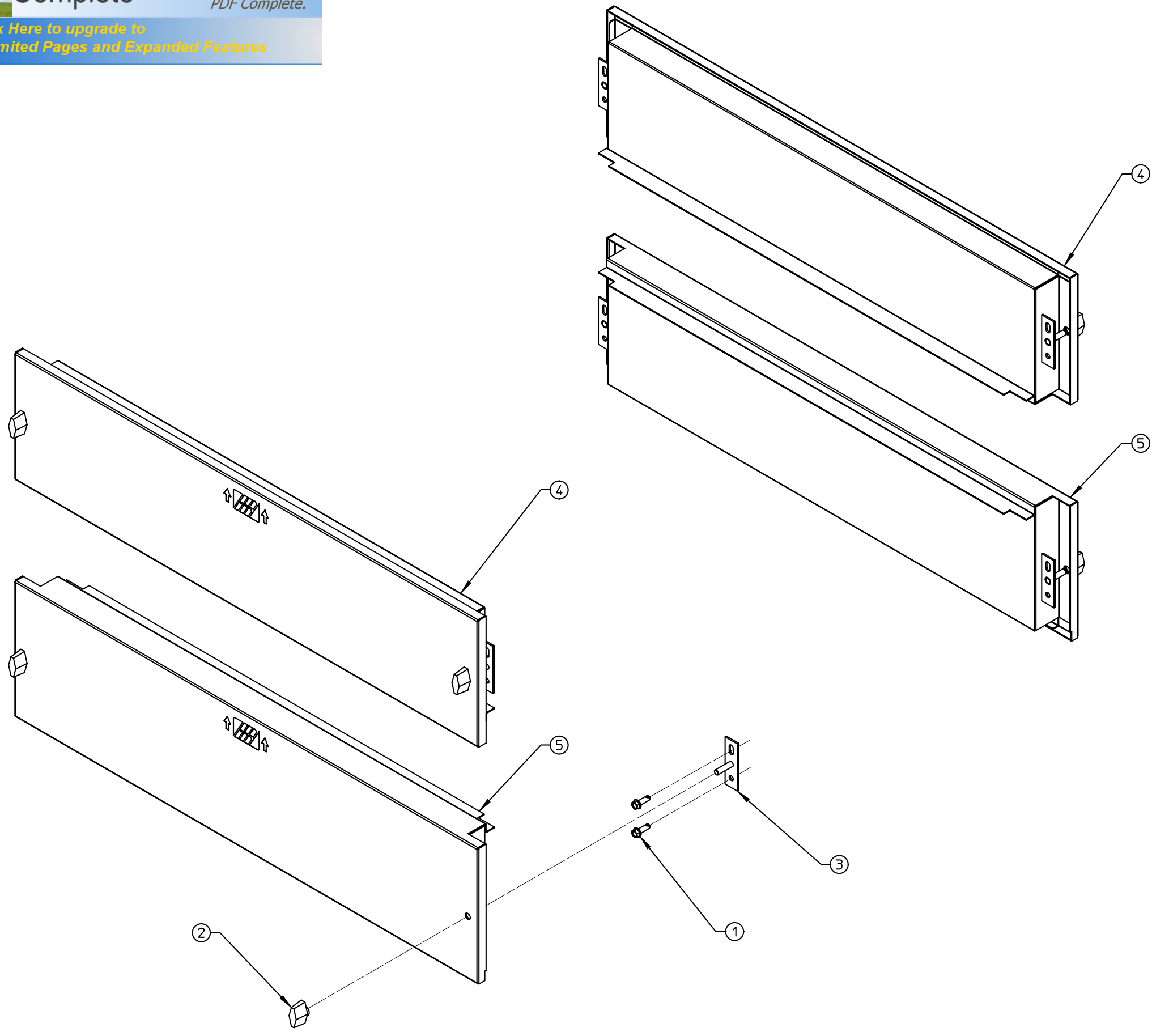
65824 ASSY, BLWR PNL TOP

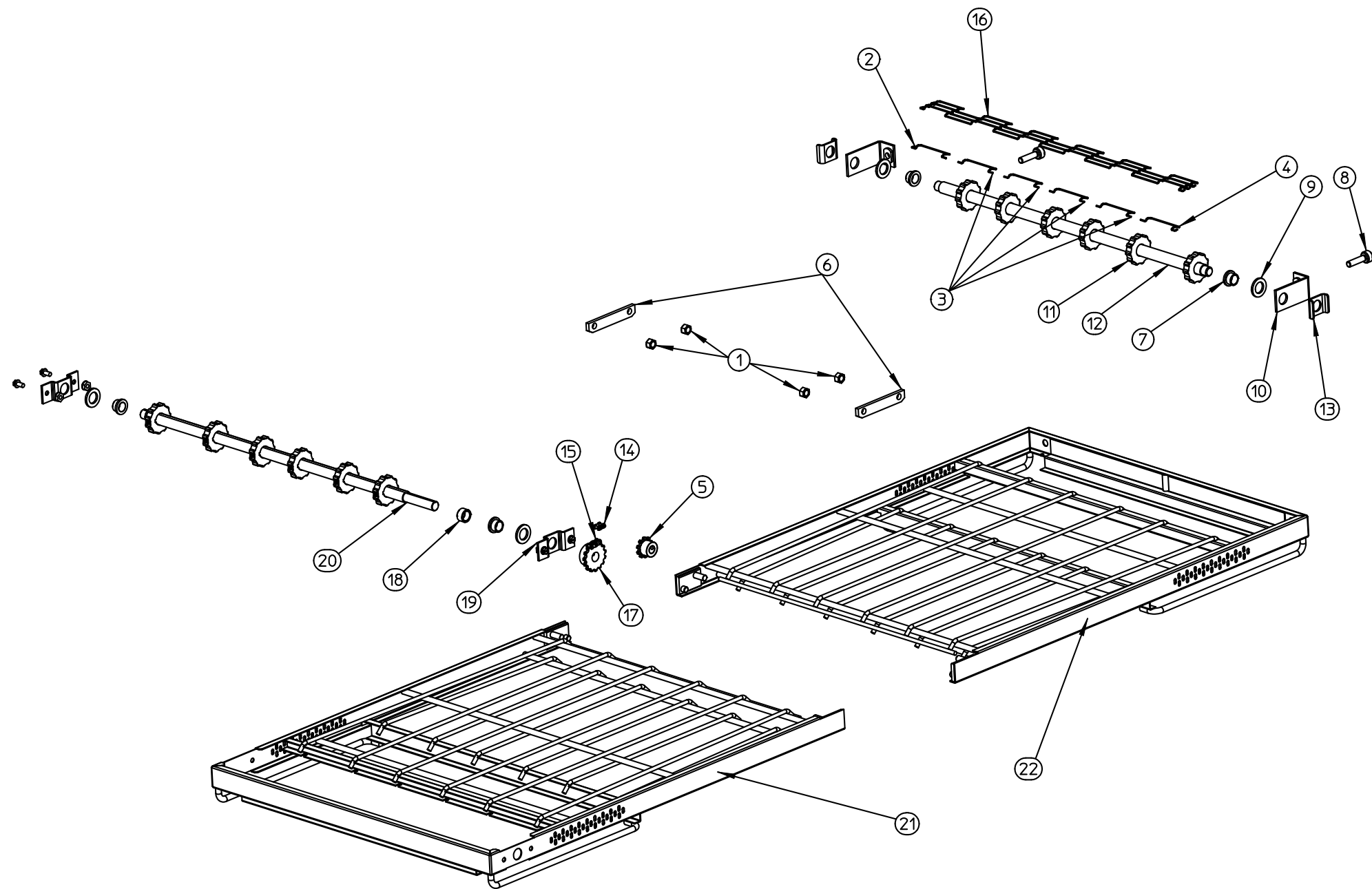


17	1	65417	TAPE, FIBERGLASS 56 x 1 x 0.625
16	1	65890	WLDMT, BLWR SIDE COVER
15	1	65833	WLDMT, BLWR INSUL
14	1	66317	ASSY, TC W SOCKET (LONG)
13	1	65742	PROBE, AIR SENSE UPR PS636
12	2	66228	ASSY, BLWR BEARING PS636
11	1	66381	BELT, POLY-V JASON 400
10	1	66382	BELT, POLY-V JASON 370
9	1	61865	PLATE, CVR SENSOR
8	1	66318	ASSY, TC W/SOCKET (SHORT)
7	1	65891	WLDMT, BLWR SIDE COVER
6	2	66213	RETAINER, SHAFT SEAL PS636
5	2	59669	SEAL, SHAFT 1/2" PTFE PS624
4	2	65658	HOUSING, BLWR PS636
3	2	65754	WHEEL, BLWR 5.75D PS636
2	2	65685	RING, BLWR INLET
1	1	66162	WLDMNT, BLWR COVER
ITEM	QTY	PART NO.	DESCRIPTION

PLUGS/HDWR PS636

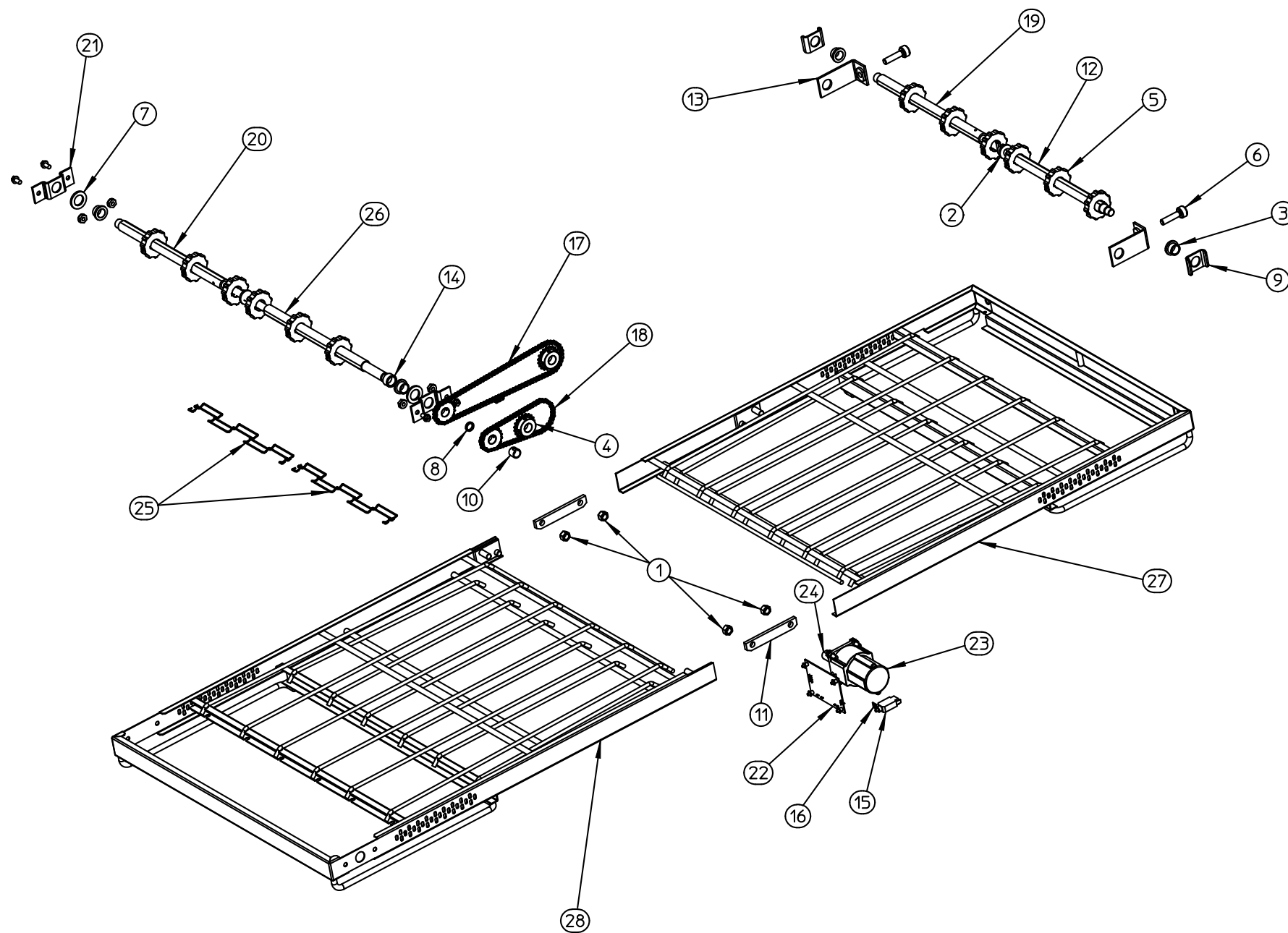
5	2	65872	ASSY,END PLUG PS636
4	2	65456	ASSY, END PLUG UPPER PS636
3	8	48640	ASSY,END PLUG MOUNTING PS536
2	8	36452	NUT,WING-PLASTIC 1/4-20
1	16	21296-0005	SCR,HX WSHHD 12-14X3/4 SS BSD
ITEM	QTY	PART NO.	DESCRIPTION





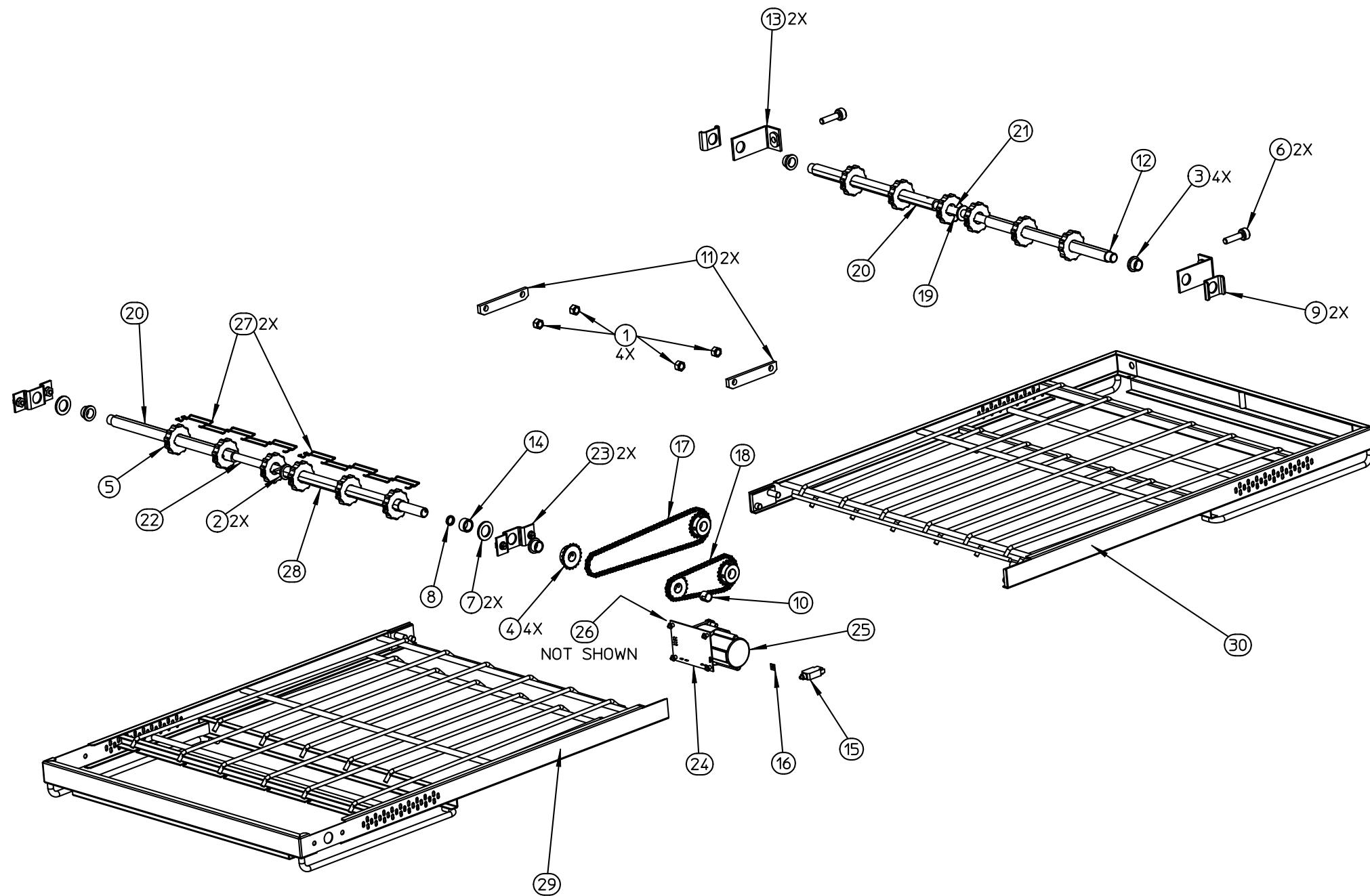
ITEM	QTY	PART NO.	DESCRIPTION
1	4	21176-0002	NUT,LOCKHEX SS 3/8-16
2	1	33900-0091	LINK,MASTER-LEFT-1/2P X 24"
3	4	33900-0092	LINK,MASTER-MIDDLE-1/2P X 24"
4	1	33900-0093	LINK,MASTER-RIGHT-1/2P X 24"
5	1	35409	SPRKT,35 CHAIN 10T 1/2
6	2	35900-0398	PLATE,PIVOT CONV FRAME PS200
7	2	22034-0003	BUSH,FLANGE 3/4OD X 5/8ID N/D
8	2	35000-1008	SCR,ADJ-CONV IDLER(200-310&60
9	2	35000-1080	SPACER,NYLON 3/4ID 1 1/4OD
10	2	37000-0413	WLDMT,IDLER (200,310,360)
11	6	22229-0003	SPRKT,CONV DRIVE 2.0D W/SCR
12	1	35900-0422	SHAFT,IDLER-CONV PS224
13	2	54947	BRKT,CONVEYOR SHAFT SUPPORT
14	1	22273-0002	LINK,MASTER #35
15	1	60183	CHAIN,ROLLER #35X13-7/8
16	1	66279	BELT,CONV WIRE SS 24"X120"
17	1	66581	SPRKT,#35-15T-5/8 BORE
18	2	43275	SPACER,CONVEYOR
19	2	49972	BRKT,CONVEYOR SUPPORT PS536
20	1	67240	SHAFT,DRIVE-CONV
21	1	67237	WLDMT,CONV FRM COMPT DR
22	1	67265	WLDMT,CONV FRM COMPT ID STD

CONVEYOR,SIB PS636 STANDARD



ITEM	QTY	PART NO.	DESCRIPTION
1	4	21176-0002	NUT,LOCKHEX SS 3/8-16
2	2	21415-0001	WASHER,FLAT BRZ 1
3	4	22034-0003	BUSH,FLANGE 3/4OD X 5/8ID N/D
4	4	22159-0003	SPRKT,25 CHAIN 20T 5/8B
5	12	22229-0003	SPRKT,CONV DRIVE 2.0D W/SCR
6	2	35000-1008	SCR,ADJ-CONV IDLER(200-310&60
7	2	35000-1080	SPACER,NYLON 3/4ID 1 1/4OD
8	1	35000-1531	SPACER,NYLON (360SB)
9	2	35900-0020	BRKT,CONVEYOR SHAFT SUPPORT
10	1	35900-0023	BUSH,SPROCKET-FRONT DRIVE
11	2	35900-0398	PLATE,PIVOT CONV FRAME PS200
12	1	35900-0406	SHAFT,REAR CONV IDLER PS224SB
13	2	37000-0413	WLDMT,IDLER (200,310,360)
14	1	43275	SPACER,CONVEYOR
15	1	45664	BREAKER,CIRCUIT 240V 1A
16	1	45713	LABEL,CIRC BRKR 240V 1A
17	1	49400-0051	ASSY,ROLLER CHAIN SPB 26-1/2"
18	1	49400-0070	ASSY,ROLLER CHAIN SPB 15"
19	1	49400-0260	ASSY,FRONT CONV-IDLER SHAFT
20	1	49400-0261	ASSY,FRONT CONV DRIVE SHAFT
21	2	49972	BRKT,CONVEYOR SUPPORT PS536
22	1	65566	BOARD,MOTOR CNTRL PS636
23	1	65756	MOTOR,GEAR 1:200 GTR2
24	1	65818	ADAPTER,MOTOR SHAFT
25	2	66280	BELT,CONV WIRE SS 11"X120"
26	1	67679	SHAFT,REAR CONV DRIVE 636SPB
27	1	65433	WLDMT,CONV FRM COMPT ID
28	1	67237	WLDMT,CONV FRM COMPT DR

PS636 SPLIT BELT CONVEYOR



CONVEYOR,SPB PS636 STANDARD

ITEM	QTY	PART NO.	DESCRIPTION
1	4	21176-0002	NUT,LOCKHEX SS 3/8-16
2	2	21415-0001	WASHER,FLAT BRZ 1
3	4	22034-0003	BUSH,FLANGE 3/4OD X 5/8ID N/D
4	4	22159-0003	SPRKT,25 CHAIN 20T 5/8B
5	12	22229-0003	SPRKT,CONV DRIVE 2.0D W/SCR
6	2	35000-1008	SCR,ADJ-CONV IDLER(200-310&60
7	2	35000-1080	SPACER,NYLON 3/4ID 1 1/4OD
8	1	35000-1531	SPACER,NYLON (360SB)
9	2	35900-0020	BRKT,CONVEYOR SHAFT SUPPORT
10	1	35900-0323	BUSH,SPROCKET-FRONT DRIVE
11	2	35900-0398	PLATE,PIVOT CONV FRAME PS200
12	1	35900-0406	SHAFT,REAR CONV IDLER PS224SB
13	2	37000-0413	WLDMT,IDLER (200,310,360)
14	1	43275	SPACER,CONVEYOR
15	1	45644	BREAKER,CIRCUIT 240V 1A
16	1	45713	LABEL,CIRC BRKR 240V 1A
17	1	49400-0051	ASSY,ROLLER CHAIN SPB 26-1/2"
18	1	49400-0070	ASSY,ROLLER CHAIN SPB 15"
19	1	21646-0004	PIN,ROLL SS H-DUTY 1/8
20	1	35900-0405	SHAFT,FRONT CONV PS224SB
21	1	35900-0517	SHAFT,CONN. FRONT CONV. IDLER
22	1	35900-0404	SHAFT,CONN FRNT CONV DRV PS224
23	2	49972	BRKT,CONVEYOR SUPPORT PS536
24	1	65566	BOARD,MOTOR CNTRL PS636
25	1	65756	MOTOR,GEAR 1:200 GTR2
26	1	65818	ADAPTER,MOTOR SHAFT
27	2	66340	BELT,CONV WIRE SS 11"X126"
28	1	67679	SHAFT,REAR CONV DRIVE 636SPB
29	1	67237	WLDMT,CONV FRM COMPT DR
30	1	67265	WLDMT,CONV FRM COMPT ID STD